

FBI STATISTICS - CRIME IN THE UNITED STATES

By Metropolitan Area, 2005

Crime Rates Per 100,000 population

	Population	Violent Crimes	Murder	Forcible Rape	Robbery	Aggravated Assault	Property Crime	Burglary	Theft Motor Vehicle	Theft Motor Vehicle
Memphis	1,262,520	1,196.8	13.9	45.3	389.8	747.9	6,085.8	1,680.4	807.9	739.0
Nashville	1,410,545	894.1	8.1	44.8	200.7	640.5	4,135.5	775.3	367.7	410.3
Dallas	5,794,020	550.8	6.8	34.2	195.1	314.7	4,727.7	1,051.1	541.0	573.4
Louisville	1,208,545	412.6	5.4	25.7	179.5	202.1	3,489.2	856.4	361.8	432.5
Atlanta	4,837,981	492.0	6.9	22.2	195.9	267.1	4,115.2	936.9	607.7	633.5
Jackson MS	520,502	362.9	10.6	48.0	145.1	159.3	3,846.7	990.0	480.3	519.0
Little Rock	642,769	863.5	8.9	47.6	197.3	609.7	5,767.2	1,348.4	407.3	794.5

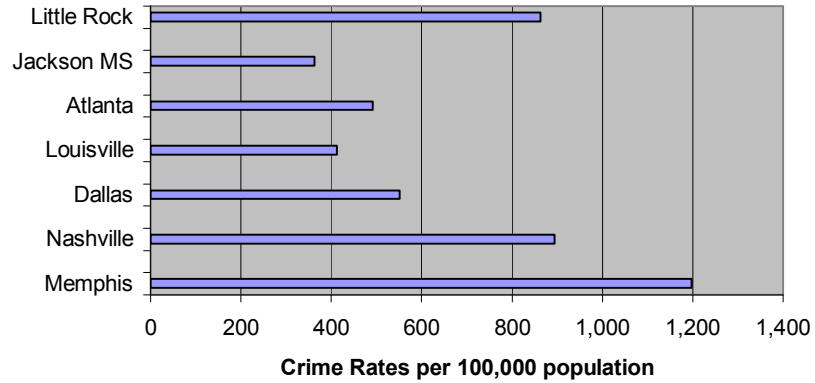
	State of Tennessee						City of Memphis					
	2001	2002	2003	2004	2005	2006	2001	2002	2003	2004	2005	2006
Population	5,689,283	5,740,021	5,797,289	5,841,748	5,900,962	5,962,959	650,100	650,100	648,882	645,978	671,929	672,277
Total Group A Offenses*	579,742	580,680	597,049	614,850	629,095	624,151	109,318	112,375	112,738	117,618	127,502	130,918
Offenses per 100,000 pop.	10,190	10,116	10,299	10,525	10,661	10,467	16,816	17,286	17,374	18,207	19,975	19,474
Number Cleared	148,692	163,722	178,327	189,710	202,708	207,718	23,279	24,970	23,651	26,195	25,429	25,571
Percent Cleared	25.6%	28.2%	29.9%	30.9%	32.2%	33.3%	21.3%	22.2%	21.0%	22.3%	19.9%	19.5%
Group A Arrests-Adult	103,415	108,426	116,836	122,476	131,266	131,088	17,589	16,443	15,255	16,570	18,227	17,420
Group A Arrests-Juvenile	17,211	17,297	17,669	18,411	20,696	20,506	4,666	4,230	4,096	4,604	5,869	5,112
Group B **Arrests-Adult	133,419	142,940	148,968	154,454	157,618	168,410	6,937	5,705	6,018	8,166	7,323	9,318
Group B Arrests-Juvenile	13,865	14,218	14,897	17,479	15,070	16,413	4,299	3,811	4,423	5,477	3,225	3,413
Total Juvenile Arrests	31,076	31,515	32,566	35,890	35,766	36,919	8,965	8,041	8,519	10,081	9,094	8,525
Total Arrests	268,689	284,366	299,036	312,924	324,677	336,426	33,491	30,189	29,792	34,817	34,644	35,263
Arrests per 100,000 population	4,723	4,954	5,158	5,357	5,502	5,642	5,152	4,644	4,591	5,390	5,156	5,245
Domestic Violence Offenses	63,802	46,280	46,201	66,619	69,974	80,575	11,456	6,102	6,565	7,191	15,558	18,547
Domestic Violence Arrests	NA	16,076	16,106	21,444	23,304	29,314	NA	1,281	1,404	1,652	3,165	3,492

Source: Tennessee Bureau of Investigation 6/4/07

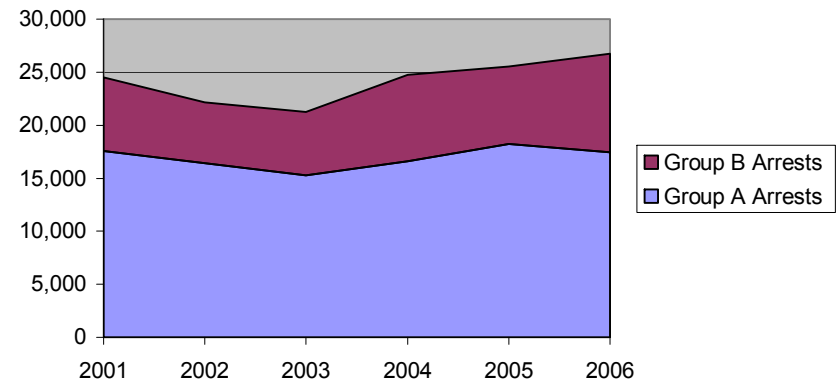
*Group A offenses include crimes against persons (murder, manslaughter, kidnapping, rape, assault, etc.); crimes against property (Arson, bribery, burglary, fraud, theft, etc.); and crimes against society (narcotic violations, gambling, prostitution, etc.)

**Group B offenses include bad checks, disorderly conduct, DUI, etc.)

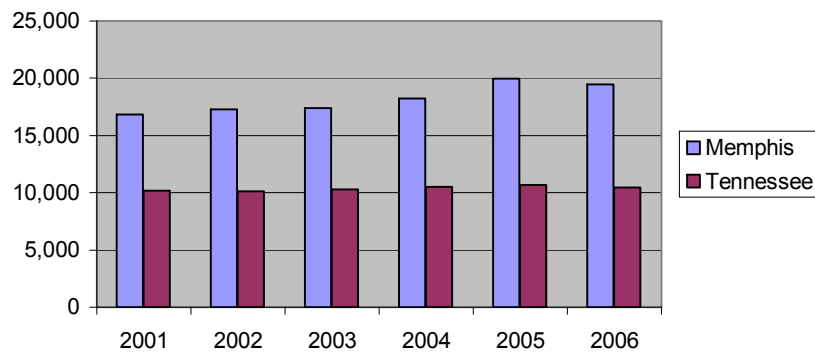
Viloent Crime Rates 2005



Adult Arrests - City of Memphis



Crime Rates - Type A Offenses per 100,000 Population



Juvenile Arrests - City of Memphis

