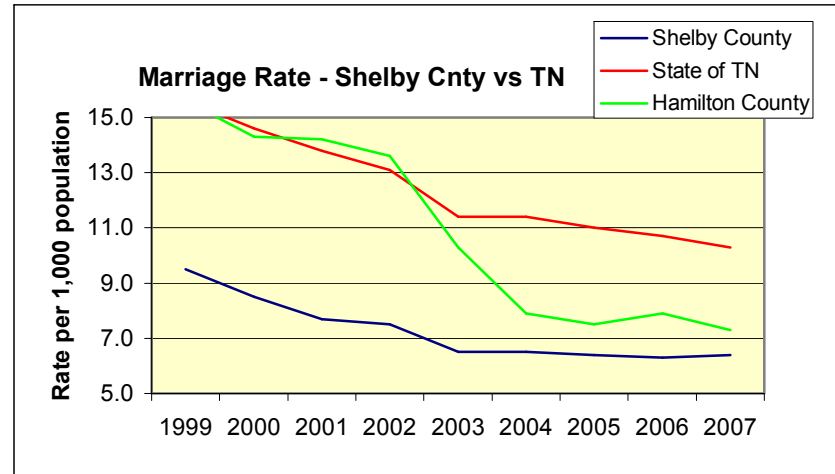
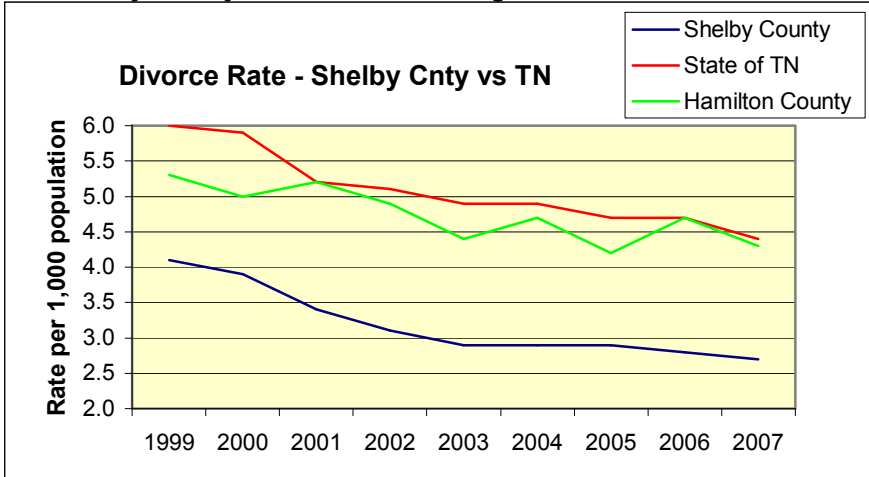


Hope Christian Community Foundation

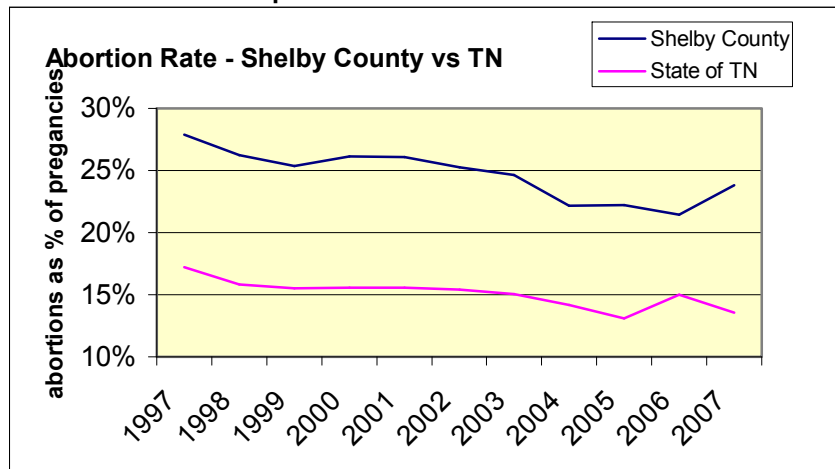
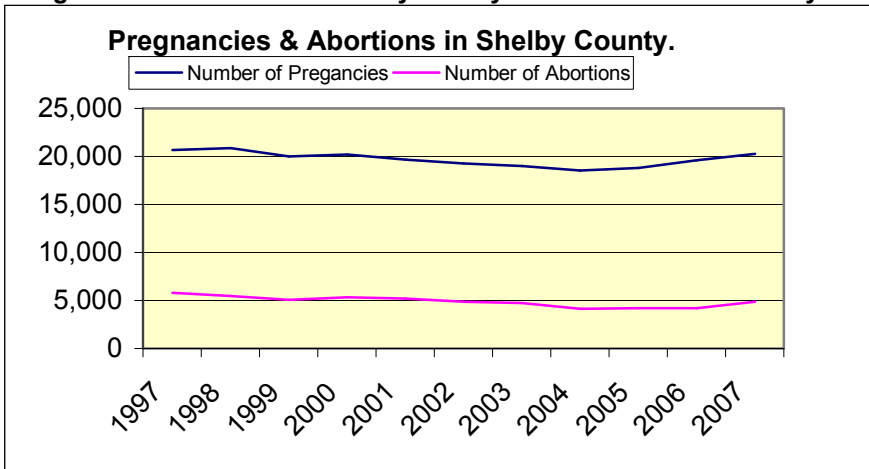
State of the City Charts:
(updated 11/2008)

Recent Trends in Divorce, Marriage, Abortions, Teen Pregnancy & Single Mother Births

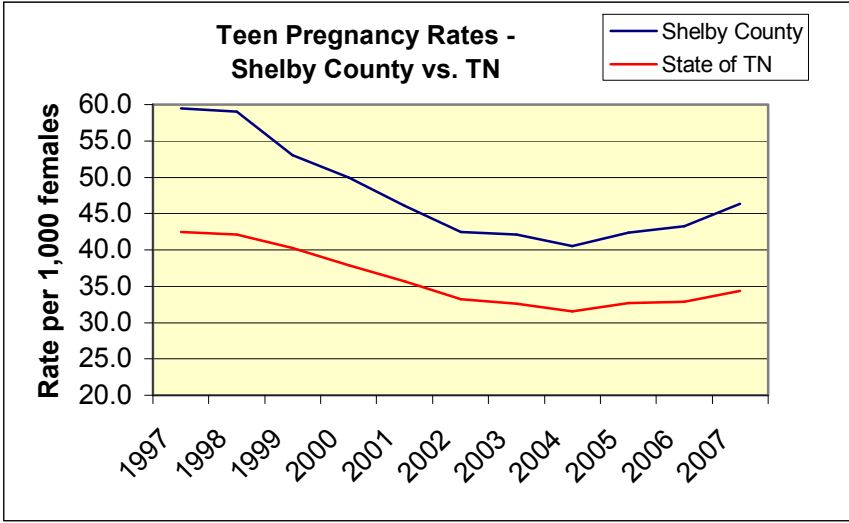
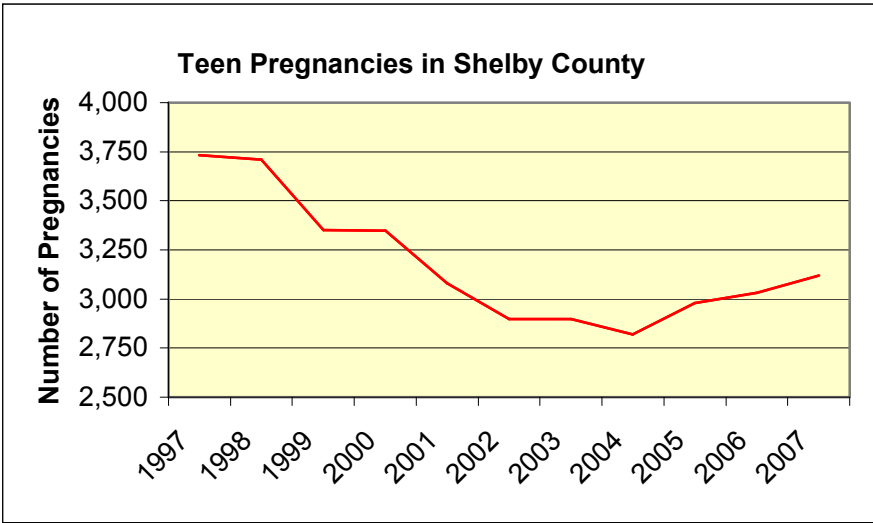
The Shelby County divorce rate is among the lowest in the state and declining....but so is the marriage rate



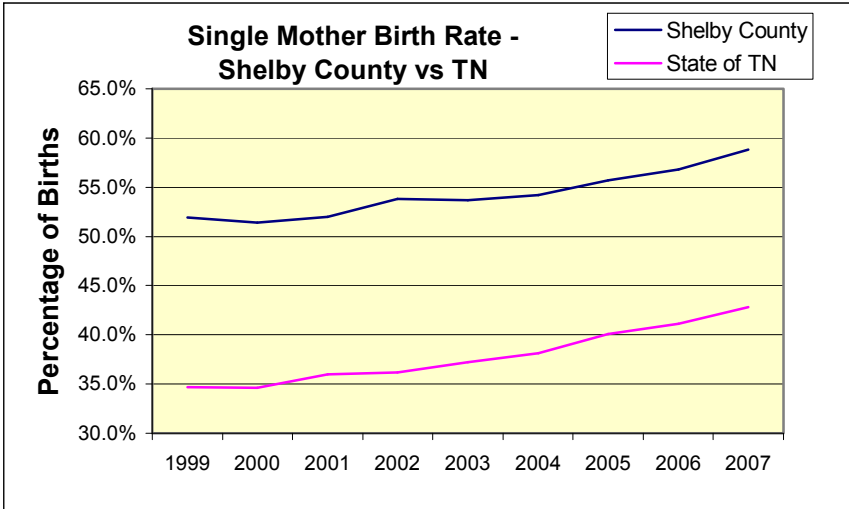
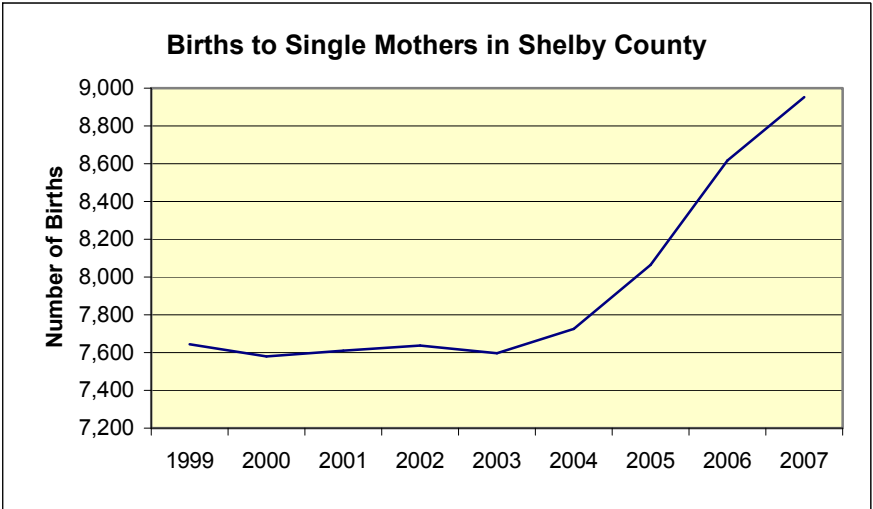
Pregnancies & abortions in Shelby County have declined moderately...but the abortion rate ticked up in 2005



Teen Pregnancy rates have been declining but they flattened in 2003 and ticked up in 2005



Meanwhile births to single mothers are increasing...and single mother birth rates have been rising,



and the poverty rate of children is highly correlated to the lack of two parent households:

Child Poverty Rate vs. Percent of Children Not Living with two Parents by Zip Code in Shelby County

